

Expedition Days Online

DOCUMENTING WILDLIFE Study Guide

Student name: _____




EXPEDITION
DAYS



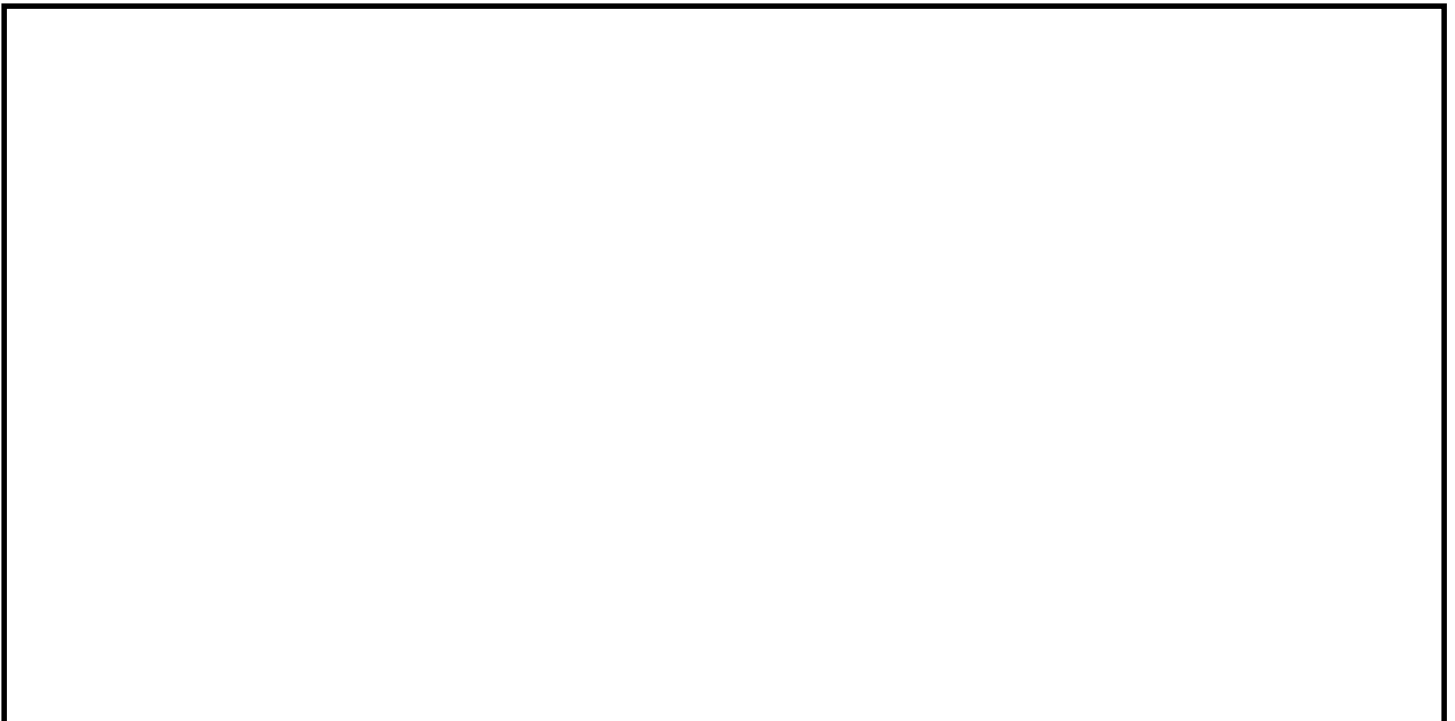
MCDOWELL
SONORAN
CONSERVANCY

What Plants and Animals Have You Seen?

1. List or draw some of the plants you have seen:



2. List or draw some of the animals you have seen:



What Animals Have You Seen?

Goal: Investigate what animals others have seen.

Instructions

- Ask your friends and family about their encounters with wildlife!
- Fill in the survey below, you can fill in the first column for person 1.

Animal	Person 1 (me)	Person 2	Person 3	Person 4	Person 5	Person 6	Person 7	Person 8	Total
Bobcat									
Coyote									
Mountain Lion									
Rabbit									
Domestic pet									
Squirrel									
Deer									
Quail									
Fox									
Other Rodents									
Javelina									
Badger									
Roadrunner									
Reptiles									
Other									

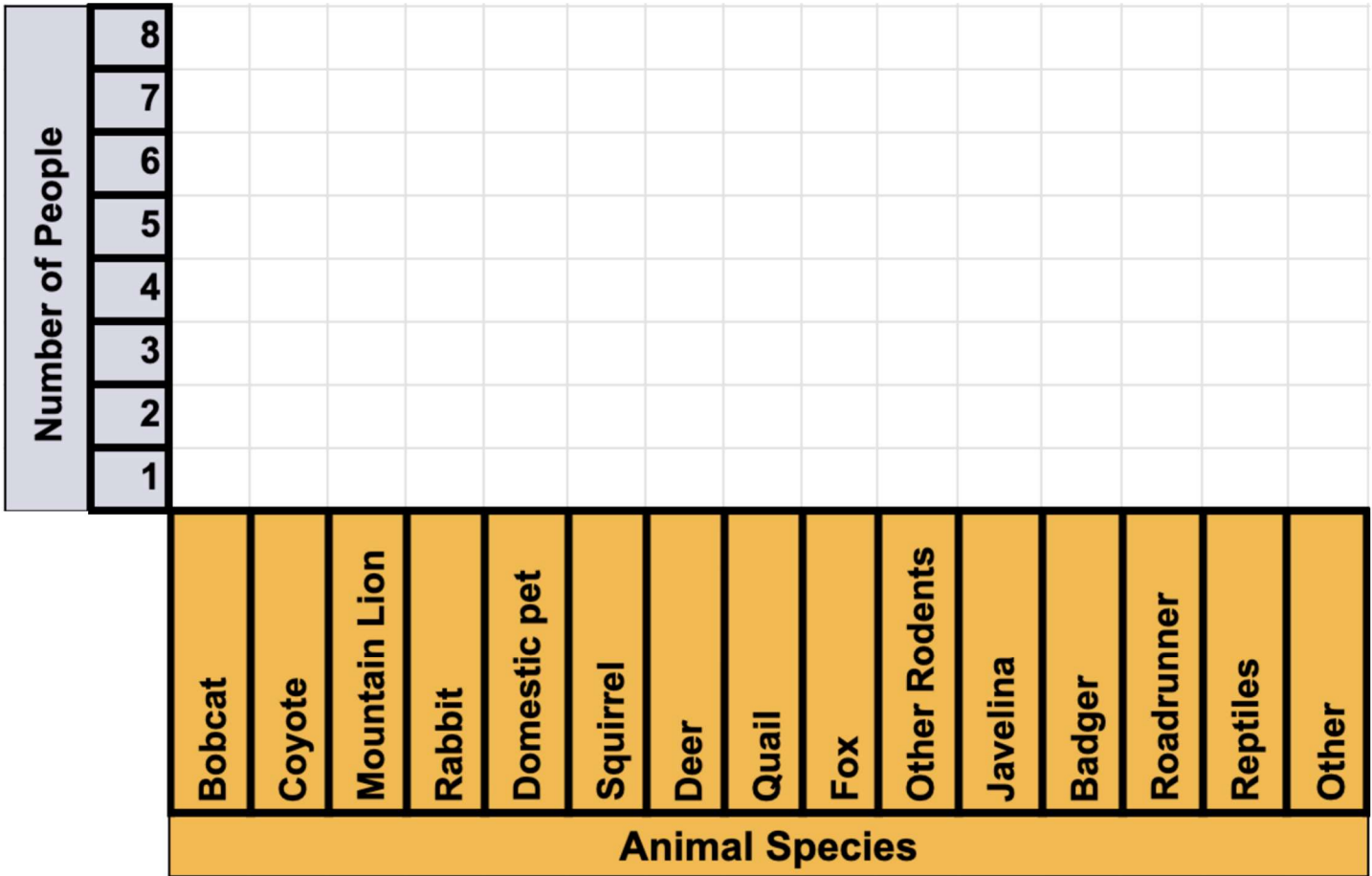
Share your results with other students in your class. What similarities and differences do you notice?

Graph the Animals We Have Seen

Goal: Create a graphical representation of your survey.

Instructions:

1. Color in the squares based on your survey results on page 2.



2. Which animal was seen most often?

How do you Feel About Your Wildlife Encounter?

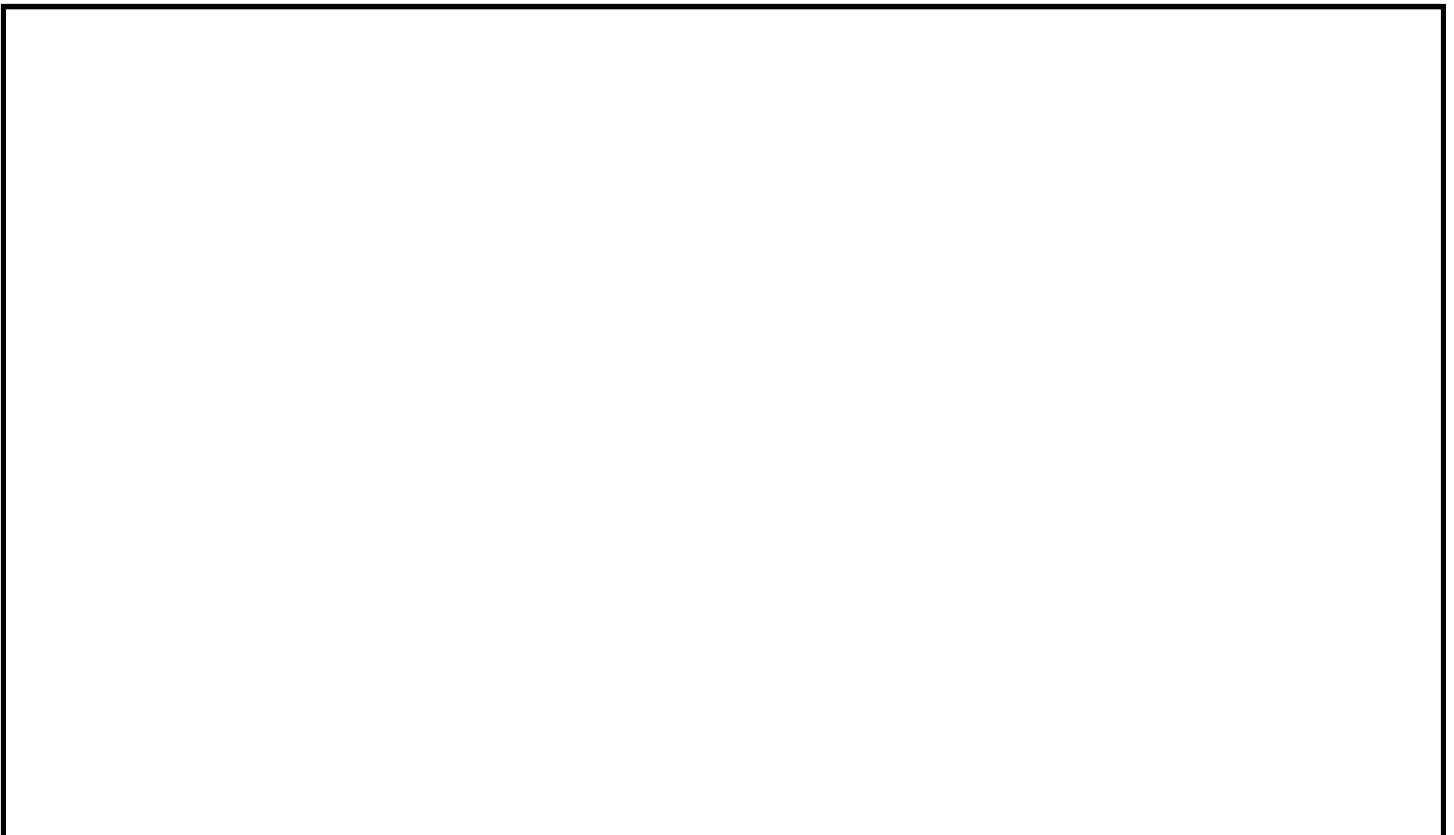
“If you talk to the animals they will talk to you and you will come to know them. When you come to know them, you will love them, with respect, without fear. What one fears one destroys. What one loves one defends.” Charles Wood.

Goal: Create a story based on your wildlife encounter.

Instructions

Answer the following questions to prepare to write a story.

1. Set the scene (where were you? Home, school, or on vacation?)
2. What did you see? (what animals did you encounter?)
3. What was the animal doing? (eating, drinking, running, exploring)
4. How did this make you feel? (happy, frightened, excited)
5. Has the way you feel about this animal changed over time?
6. You can continue or rewrite your story on page 24.



Zooniverse Tutorials

Goal: Investigate the Zooniverse website and learn how to identify wildlife.

Instructions

Click through the Zooniverse tutorials to make sure you understand the following and then check the box:

1. Do you see the photos of the animals on the left and the tools on the right?
2. Do you see the Tutorial tabs on the right? You can go back to the tutorial at any time.
3. Do you see the Field Guide tab on the side? You can use this to look up all the species and read their descriptions.
4. Do you see the characteristics tabs? You can use this to help narrow down the animals.
5. Do you see the Identify button? Once you are confident and have checked your answer you can identify the animals.
6. Do you know what to select if you are unsure of the animal?

Once you have identified a selection of animals in Zooniverse, you can fill in your survey again using the table on this page.

Looking at photos of animals is still an animal encounter! Has the amount of different species you have now encountered increased?

Zooniverse Animal Encounters	
Animal	Yes / No
Bobcat	
Coyote	
Mountain Lion	
Rabbit	
Domestic pet	
Squirrel	
Deer	
Quail	
Fox	
Other Rodents	
Javelina	
Badger	
Roadrunner	
Reptiles	
Other	

Zooniverse

Now that you have learned how to identify animals using Zooniverse, answer the following questions:

1. What animal were you surprised to see?

2. What animal did you find the most difficult to identify?

3. What animal is your favorite and what were they doing?

4. After looking at the images, how do you think animals have adapted to living in the Sonoran Desert?

5. Did any of the animals have any young with them?

The Study Area

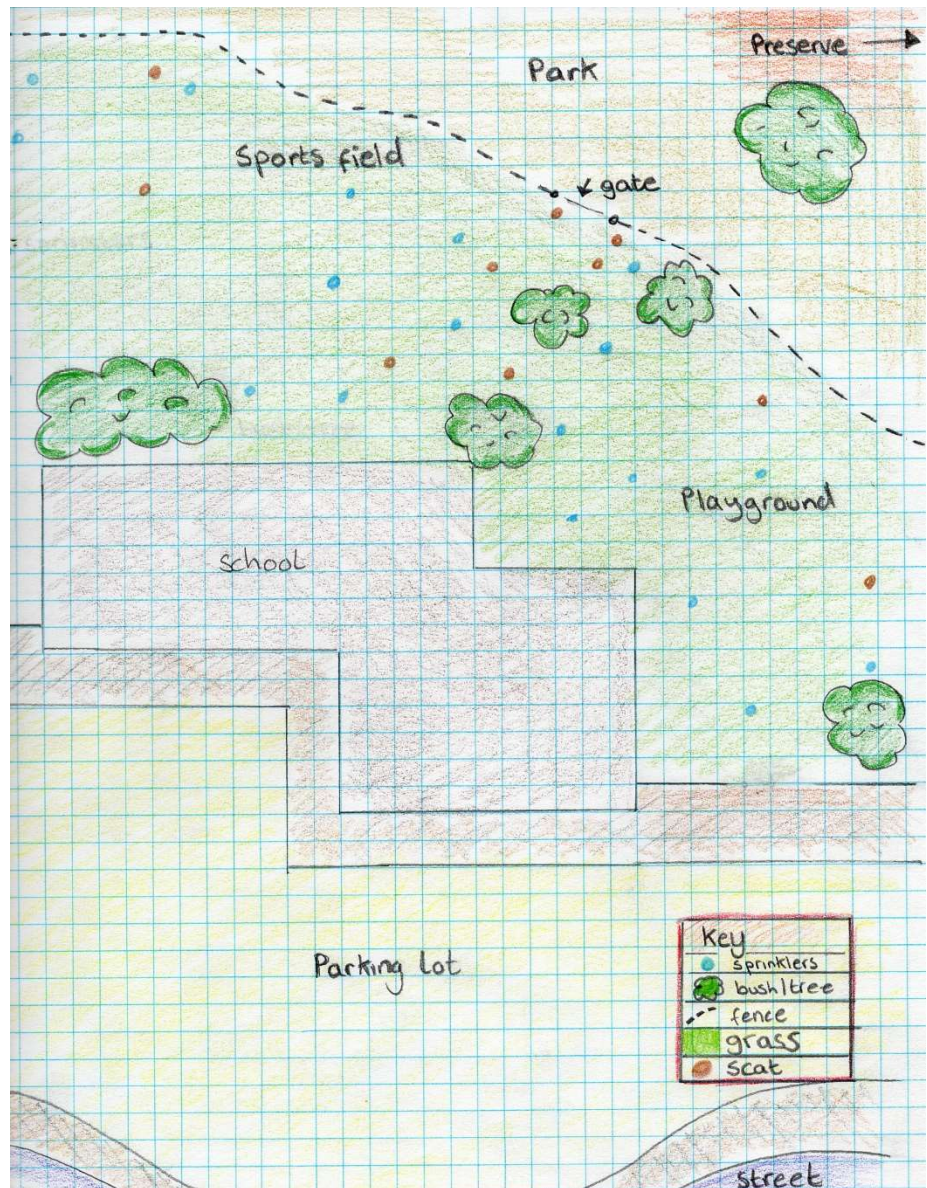
Where do You Encounter Wildlife?

Goal: Explore how to set up cameras for a wildlife study.

Instructions

The following is a map of a school in Phoenix. Where would you place a trail camera? Draw an X on the map to pick your spot. Then discuss the following questions with your friends/classmates.

1. Did your friend place a camera in the same place as you?
2. Discuss with your friends the reasons why you chose to place your camera in that spot. Think about water and food availability.
3. Did you decide to change the location of your camera based on your discussion? Why? If you have, move your camera and place an X2 on the map!



Continue to the next page



Where do You Encounter Wildlife?

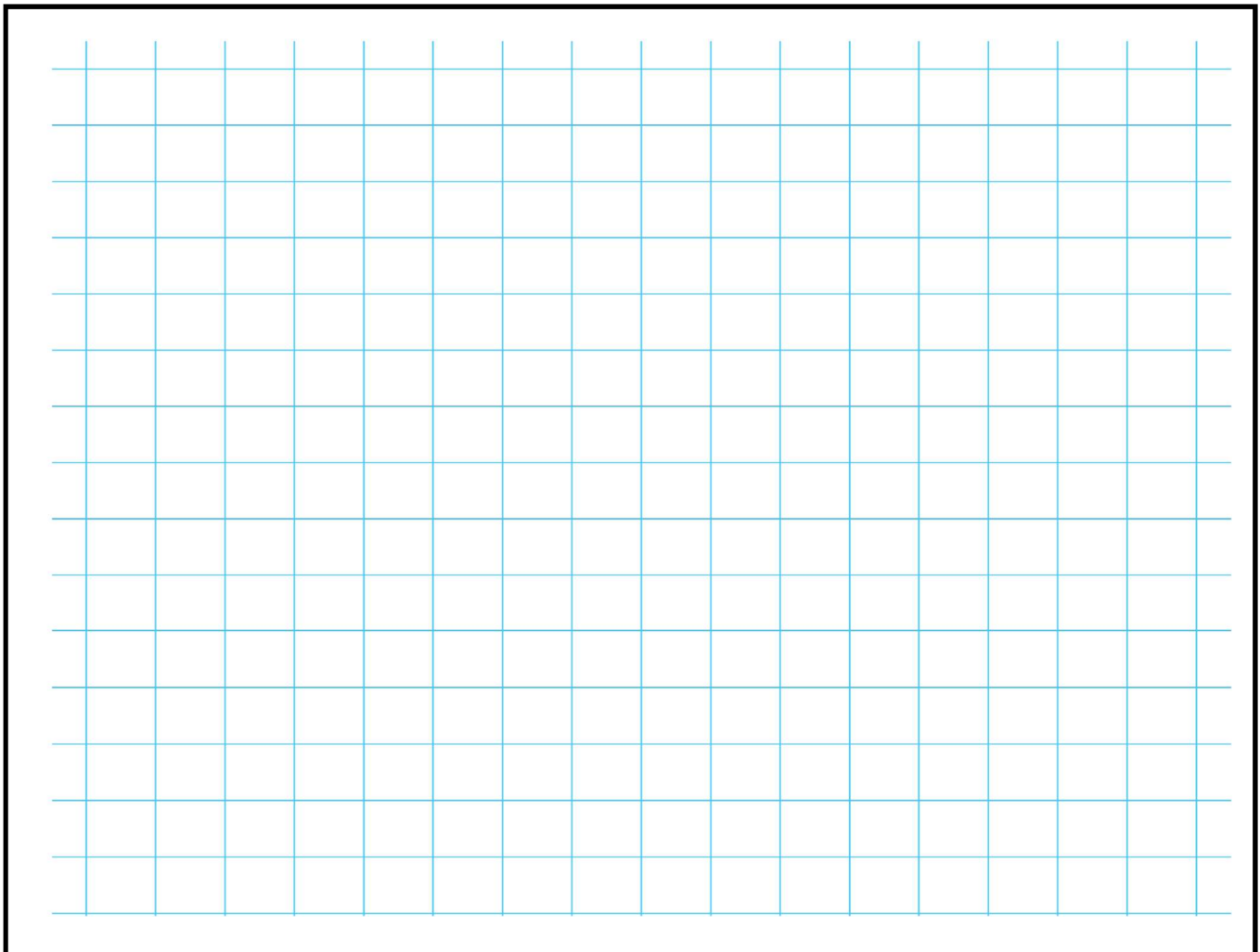
Goal: Design a map to use for a camera trap study.

Instructions

Draw a map of your school or yard and decide on the best place to set up your camera.

Things to Consider:



- What animal species have you seen and are you most likely to encounter? This will help you decide where to place the camera.
- What other open spaces are in the area? Have a look at your location on google maps. This will help you predict where animals are traveling from and to.



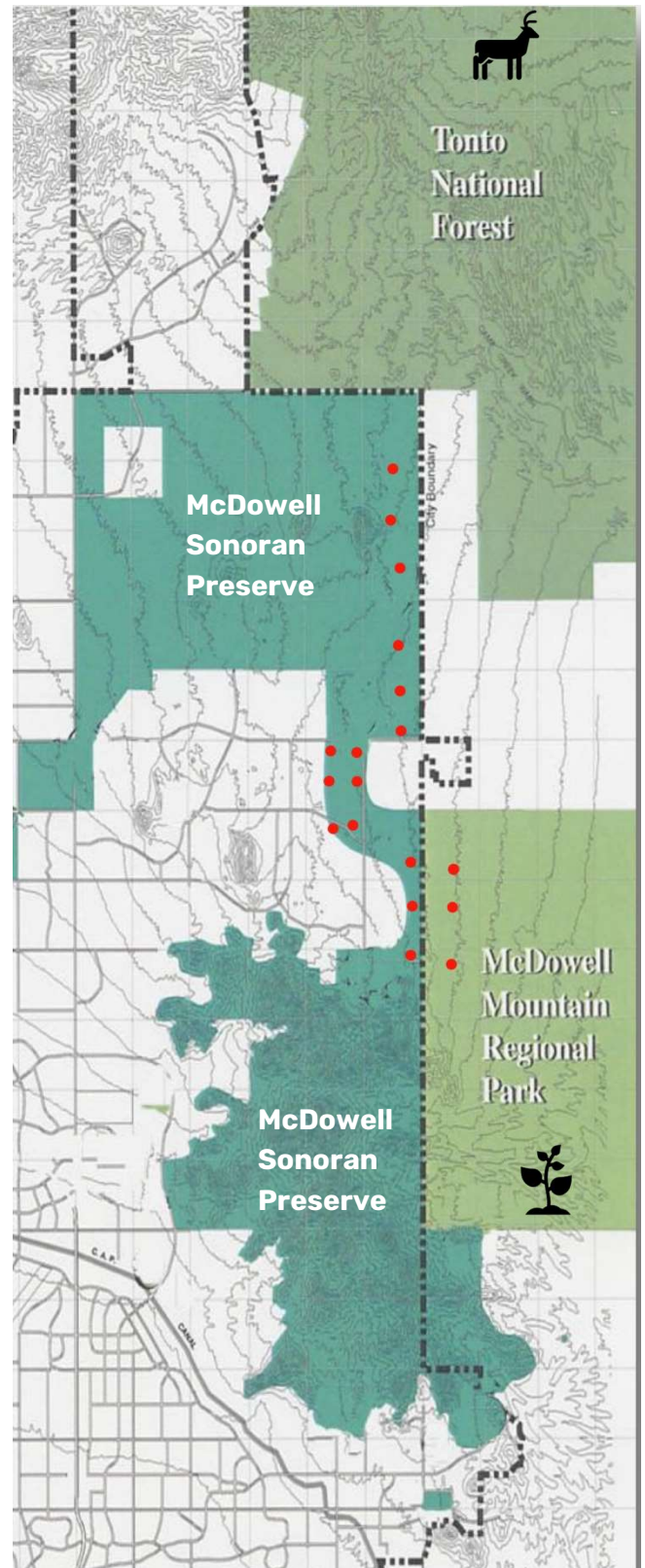
Corridor Viability Project

Goal: To explore how animals move within the McDowell Sonoran Preserve.

Instructions

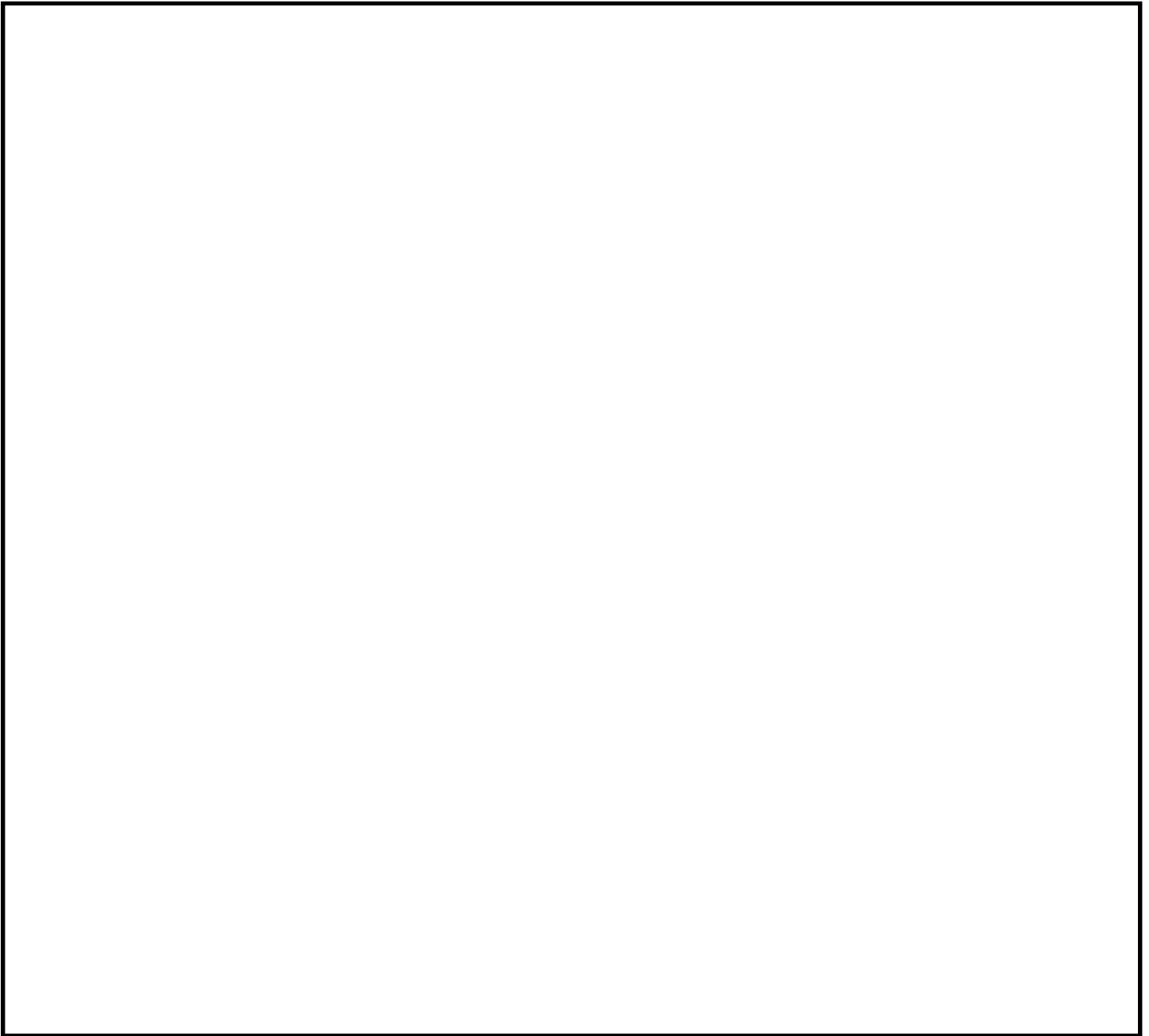
This is a map of the camera trap project. The red dots are the locations of the cameras. If you were a deer that wanted to travel from Tonto National Forest (starting at the ) to the McDowell Mountain Regional Park (ending at the ) , what would be the safest route to take?

1. Draw your route on the map.
2. Compare your route to your friends.
3. How many times do you think you would have your photo taken by one of the trail cameras?



Zooniverse Top Tips

Reflecting on what you have explored in Zooniverse, what 3 top tips would you give to someone setting up camera traps and creating their own Zooniverse projects?

A large, empty rectangular box with a black border, intended for the user to write their three top tips. The box occupies most of the page below the question.

Using the Data and Sharing Our Findings!

Goal: Create an educational piece inspired by your findings in the Zooniverse portal.

Instructions

There are lots of different things we can do with the data and photographs we have collected and organized on Zooniverse! Review the following projects and chose one to complete.



1. Citizen Scientist: Using your data from Zooniverse, make a poster to encourage people to take part in a wildlife count! Be sure to include:
Date: date of the count
Description: what do you want people to do?

2. Public Awareness: Make a social media post about keeping pets and wildlife safe. You can use the images in the back of this study guide to create your poster. Don't forget to include:
Action: What you can do to keep pets and wildlife safe.
Description: Why people should care about keeping both pets and wildlife safe.



3. Art & Photography: Using photographs from the camera traps, make a poster to advertise an art show about wildlife photography! Don't forget to include:
Title: What do you want your show to be called?
Date: Date of show
Description: Write a few words to describe your show.



Design Tips:

You can make a collage on paper or even use a free design program called Canva to create your posters!

www.canva.com



Canva is free but you will need to use your email to create an account.

You can use Canva to create posters, social media posts, and much more! They also provide [tutorials to help you!](#)

<https://www.canva.com/learn/>

You can copy and paste photos from Zooniverse, but please remember you can only use these images for your Documenting Wildlife projects.

All photos are property of the McDowell Sonoran Conservancy and are not for commercial use.

Your Project: Citizen Scientist

Tell us About Your Citizen Science Project

Your Project: Art & Photography

Tell us About Your Art and Photography Project

Your Project: Public Awareness

Tell us About Your Public Awareness Project

Become a Citizen Scientist, Citizen Artist, and a Wildlife Advocate!

Would you like to set up your own camera trap project! Apply for one of our cameras to set up in your school over the summer break! Ask your teachers to help you submit your class application form via this link:

<https://forms.gle/y467DTRXD9Q2kBZLA>

Why would you like to set up a trail camera in your school over the summer?

How will you use what you have learned in this module?

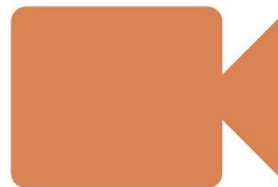
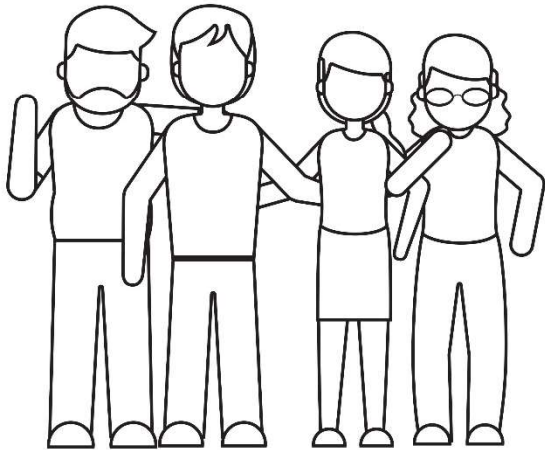
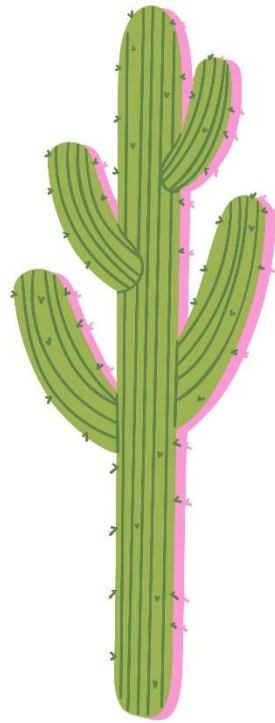
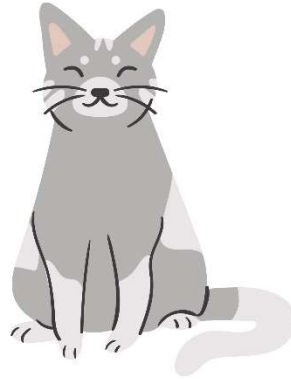
Cut & Paste Page

Here are some of the images from the Zooniverse project. You can cut & paste these images into your project.



Intentionally left blank

Cut, Paste, and Trace Page



Intentionally left blank

Tell a Story About Your Wildlife Encounter

Continue your story from page 3

Intentionally left blank