

Parsons Field Institute

Who We Are and What We Do



Tiffany Sprague
Parsons Field Institute Manager



MCDOWELL
SONORAN
CONSERVANCY

McDowell Sonoran Conservancy

McDowell Sonoran Conservancy seeks to preserve and advance natural open space through science, education, and stewardship.



MCDOWELL
SONORAN
CONSERVANCY

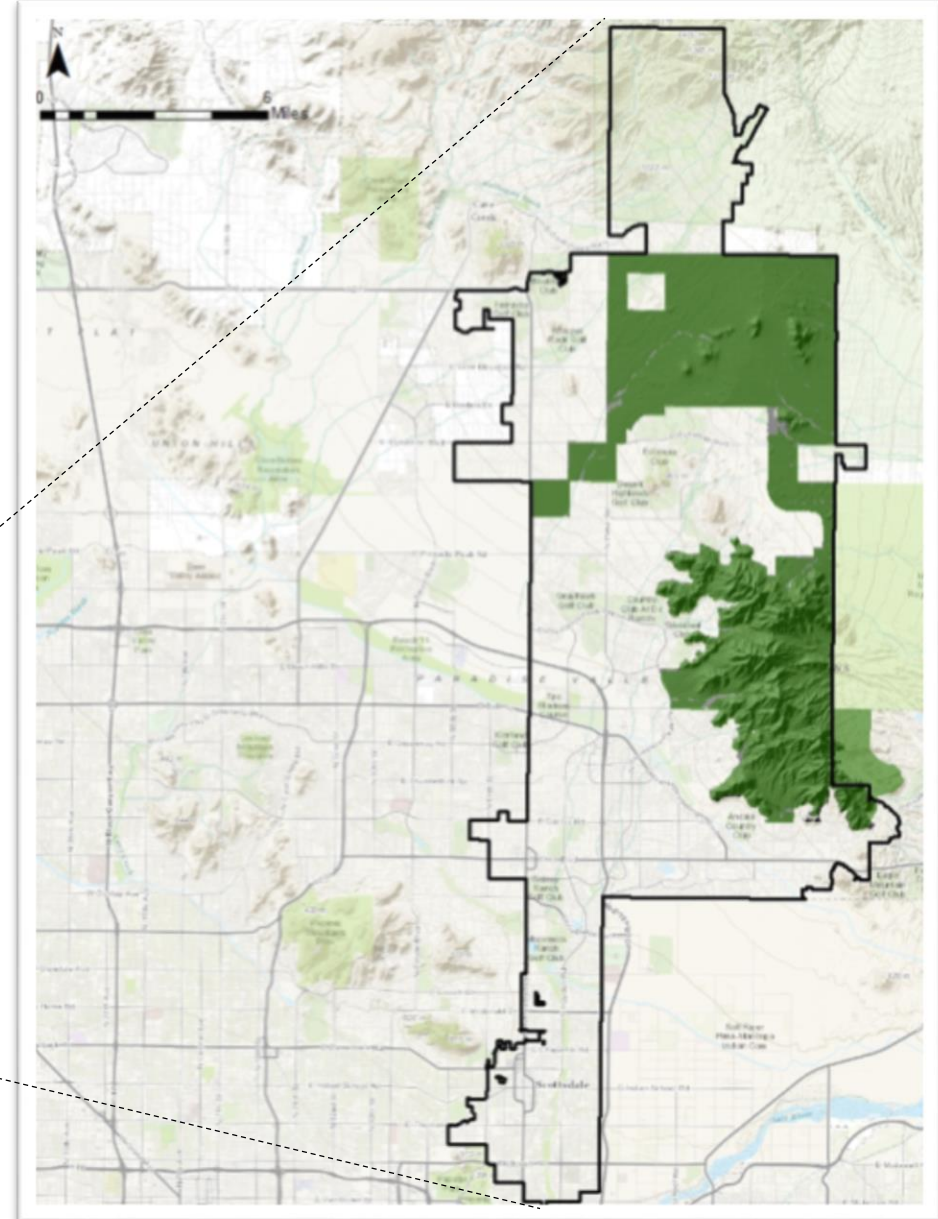
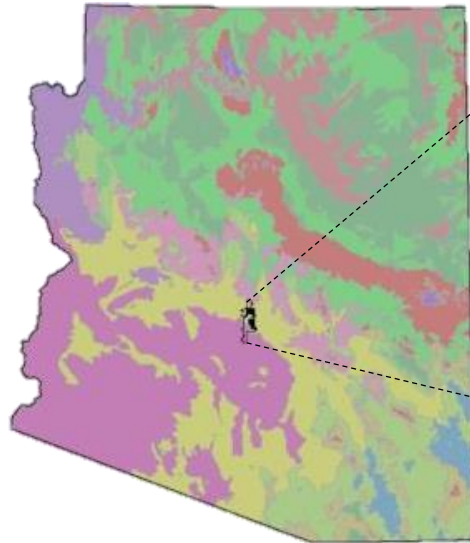
McDowell Sonoran Conservancy

- >600 volunteers
- Partnership with City of Scottsdale to protect McDowell Sonoran Preserve
 - Stewardship
 - Preservation
 - Education



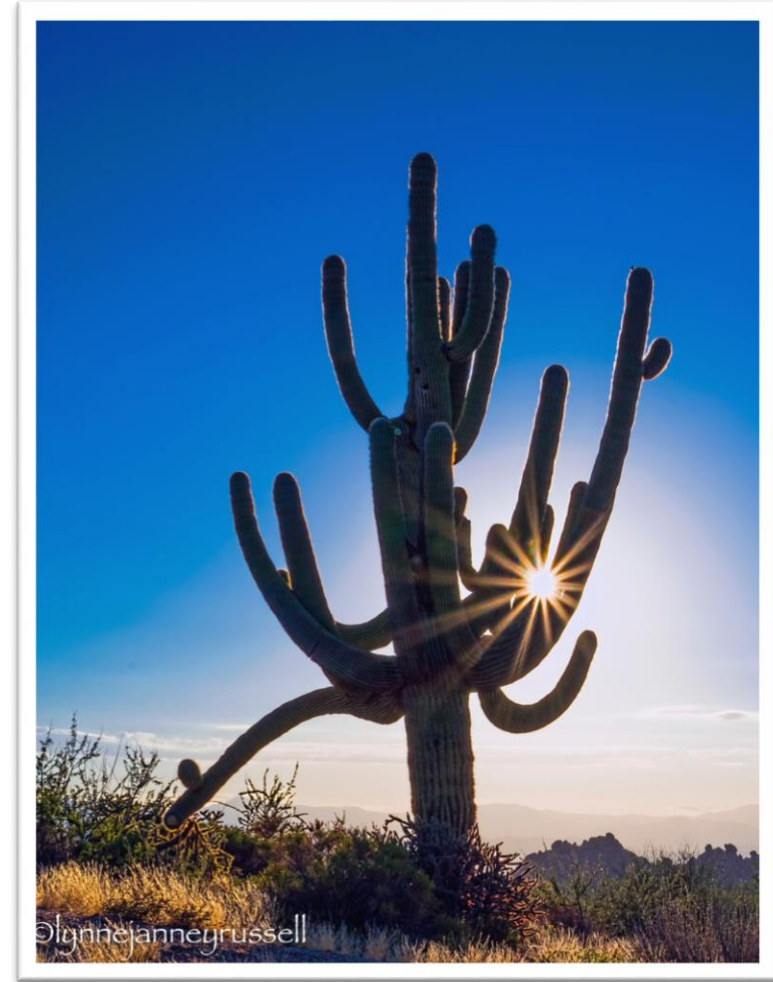
McDowell Sonoran Preserve

- 30,580 acres
- Largest urban preserve in North America



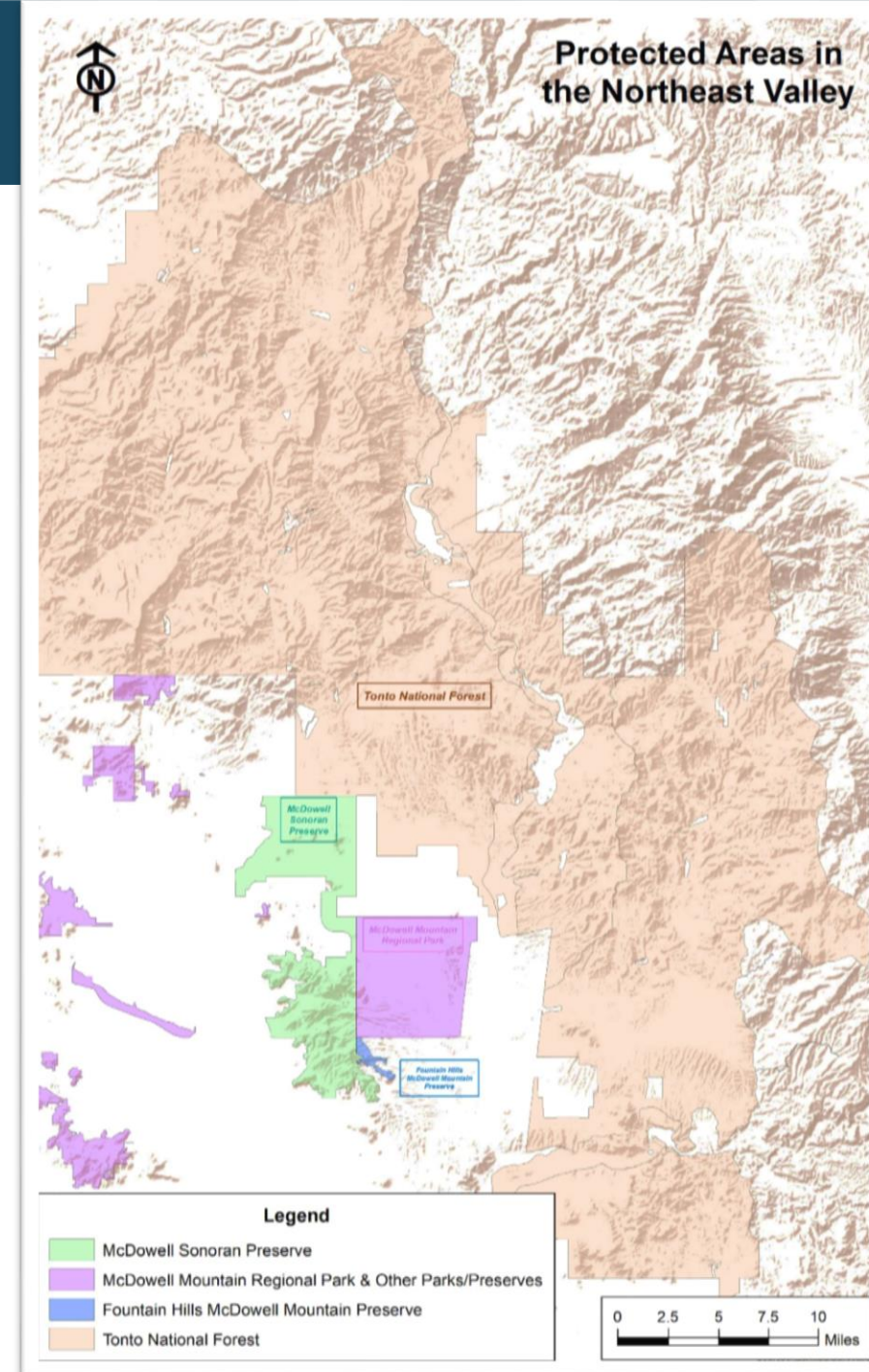
McDowell Sonoran Preserve

- Owned/managed by City of Scottsdale
- >200 miles of trails



Regional Importance

Network of 3 million acres of protected lands

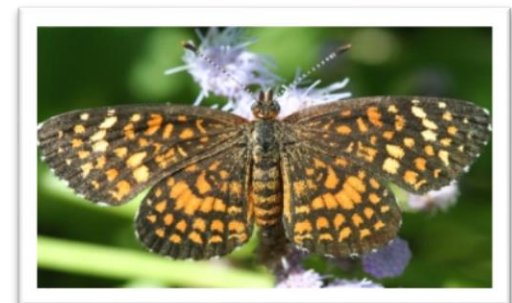


Complex Ecosystem

973 known species!

- 410 plants
- 4 amphibians
- 174 birds
- 323 invertebrates
- 30 mammals
- 32 reptiles

(minimum numbers)



Parsons Field Institute

The Parsons Field Institute at McDowell Sonoran Conservancy conducts ecological research through partnerships and citizen science to inform long-term natural resource management of the Sonoran Desert, to contribute to broader scientific knowledge, and to inspire stewardship of the desert.



Research Priorities

1. Assess the impact of urban stressors and climate change on Preserve resources.
2. Improve best management practices for the Sonoran Desert and other arid lands.



Research Priorities

- 1. Assess the impact of urban stressors and climate change on Preserve resources.**
2. Improve best management practices for the Sonoran Desert and other arid lands.



Why It Matters

Unique opportunity

- Urban preserve
- Dichotomy between use and preservation



Why It Matters

Inform management

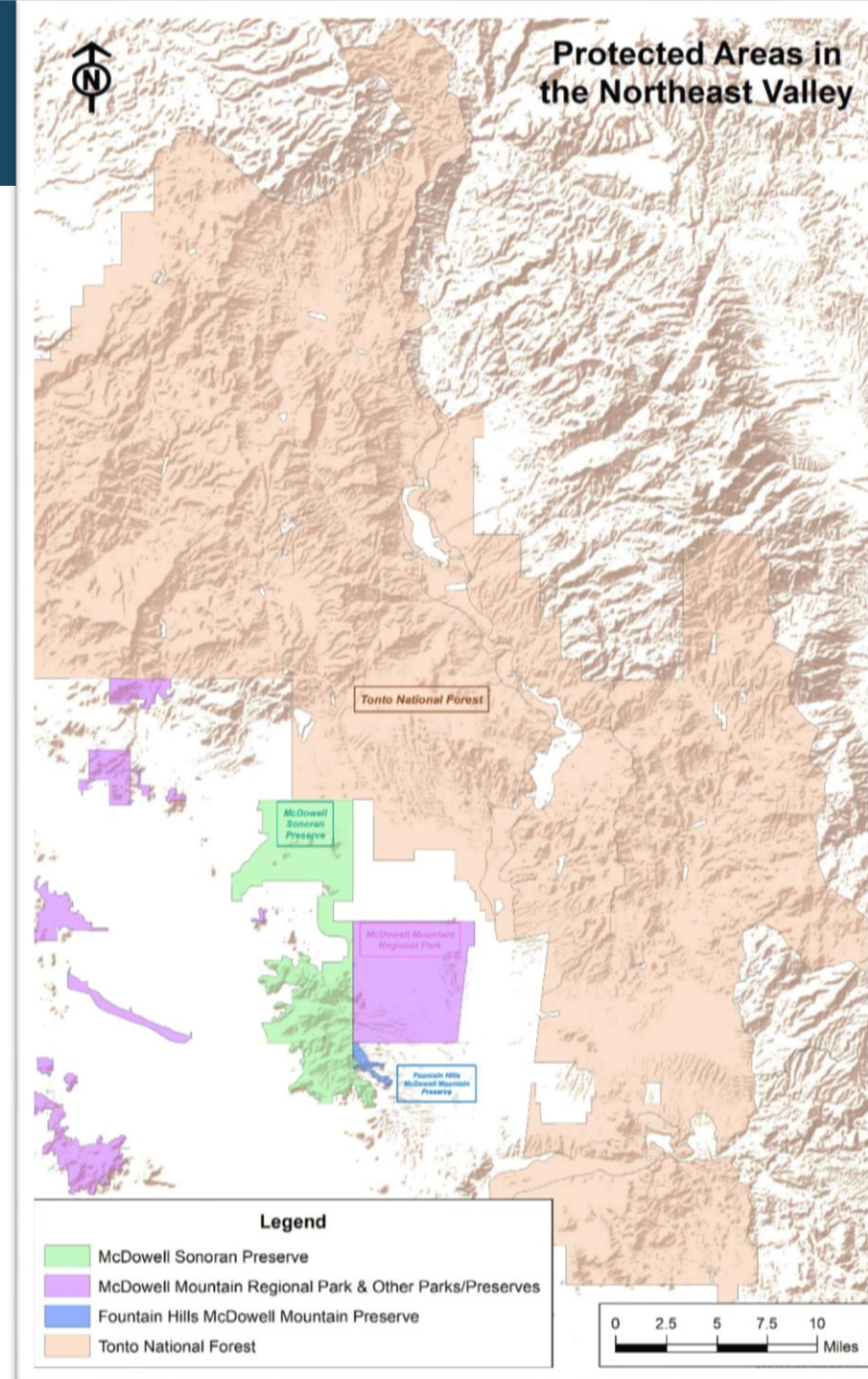
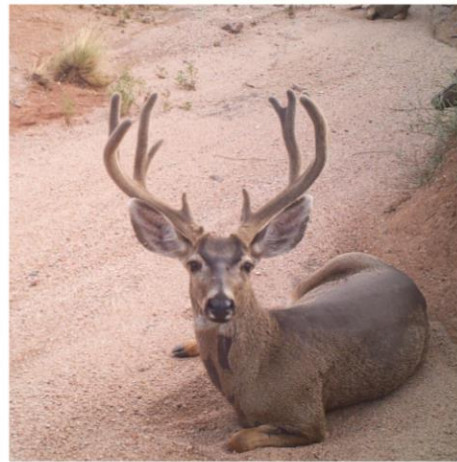
- Detect changes
- Protect resources
- Provide quality recreation
- Mitigate impacts due to uncertain future



Why It Matters

Protect regional resources

- Important part of regional network



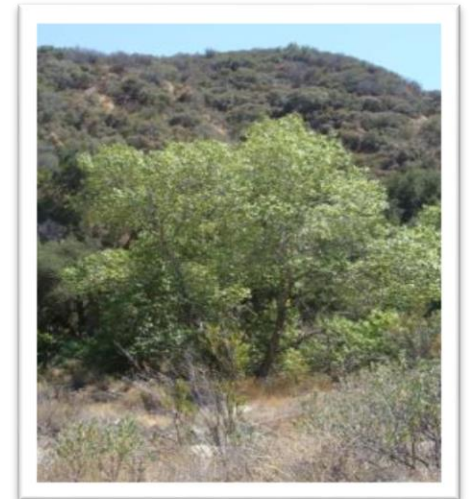
What We Do

Priority 1: Assess the impact of urban stressors and climate change on Preserve resources

Habitat
connectivity



Long-term
monitoring



MCDOWELL
SONORAN
CONSERVANCY

Habitat Connectivity

Goal: Maintain regional connectivity for wildlife movement

- Wildlife cameras
- Acoustic monitoring
- Mule deer telemetry



Long-term Monitoring

Goal: Determine composition of wildlife community and assess trends of species and populations

- Amphibians
- Arthropods
- Bats
- Birds
- Butterflies
- Reptiles
- Plant (and animal) phenology



And now for the presentations!

- Habitat connectivity
- Mule deer telemetry
- Phenology

